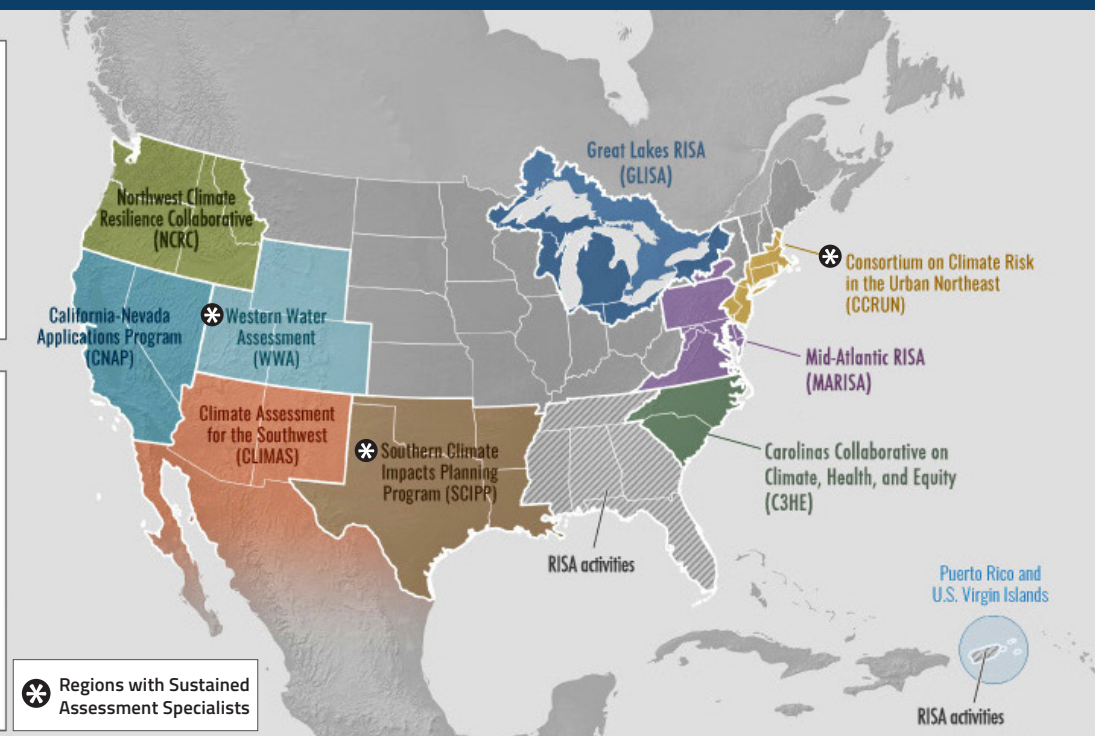
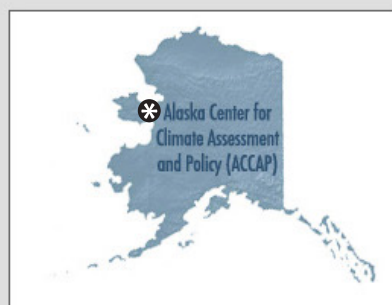


# THE RISA SUSTAINED ASSESSMENT SPECIALIST NETWORK

NOAA Regional Integrated Sciences and Assessments (RISA) Program



**Danielle Meeker**

ACCAP, University of Alaska Fairbanks, SAS 2020–present Fairbanks, AK



**Anna LoPresti**

CCRUN, Columbia University, SAS 2019–2021 New York, NY



**Zena Grecni**

Pacific RISA East-West Center, SAS 2016–present Honolulu, HI



**Darrian Bertrand**

SCIPP, University of Oklahoma, SAS 2020–2021 Norman, OK



**Benét Duncan**

WWA, University of Colorado Boulder, SAS 2017–2019 Boulder, CO

## Sustained Assessment

By facilitating enduring, collaborative partnerships between scientists and stakeholders (including state, local, and Tribal governments, communities, organizations, businesses, and individuals), sustained assessment increases the co-production and application of climate information to support climate resilience. In addition to synthesizing and sharing the “state of the science” on climate change, sustained assessment activities facilitate dialogue between scientists and on-the-ground practitioners. In doing so, sustained assessment expands our collective understanding of climate change by accounting for multiple ways of knowing and learning (including Indigenous knowledge and local observations).

Sustained assessment specialists (SASs) enhance adaptation and resilience

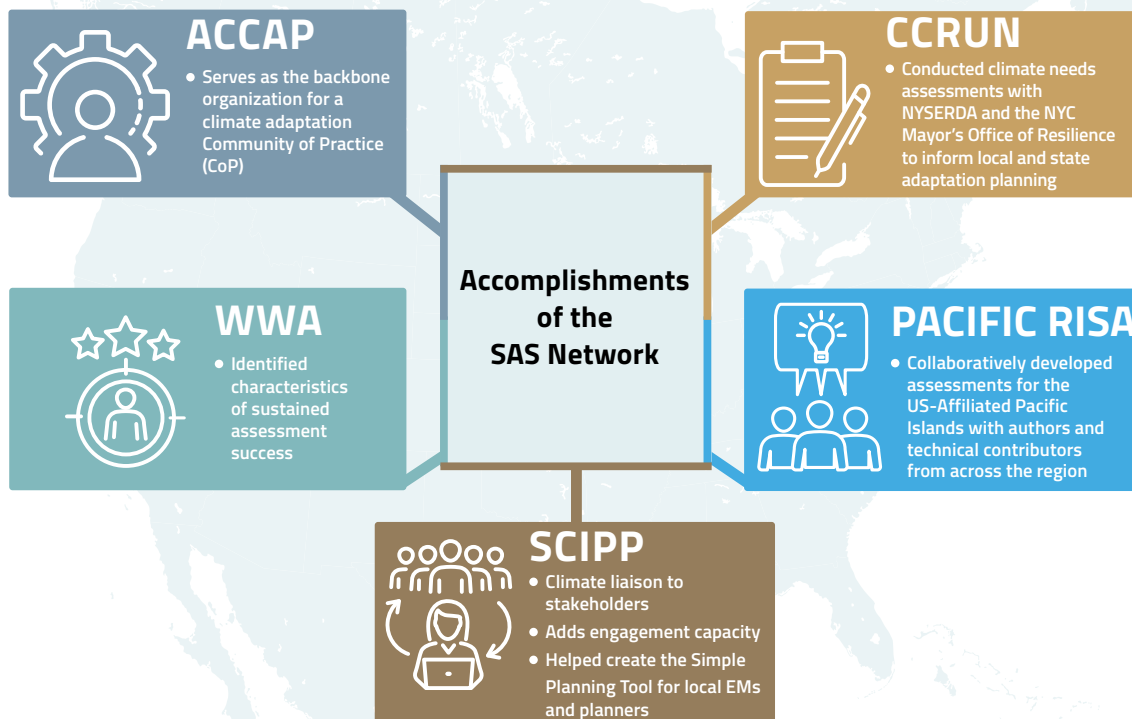
efforts by strengthening the ability of the NOAA Regional Integrated Sciences and Assessments (RISA) teams across the country to be a long-term resource for communities, building lasting relationships with information users. SASs are able to identify information needs and assess RISA contributions to adaptation progress over time, which allows for cross-RISA learning. SASs also use the identified needs in their regions to inform the National Climate Assessment process.

Sustained assessment builds upon subnational, federal, and international climate assessments by providing climate information in a way that is transparent, ongoing, and tailored to meet the needs of decision-makers that are seeking to address climate risk.

## The Network



The RISA Sustained Assessment Specialist Network promotes cross-regional collaboration, leverages expertise, and promotes learning and equitable solutions within the adaptation community. The network advances a shared vision for sustained assessment.



## GROWING THE NETWORK

The RISA Sustained Assessment Specialist network includes both current specialists and former specialists who still work within RISA programs. Demand for our services currently exceeds the capacity, due to the limited number of specialists. Growing the network

to support a sustained assessment specialist within each RISA team would provide critical support to regionally- and nationally relevant assessment activities. An expanded network will enhance learning across regions and inform equitable adaptation efforts.



## Contacts

### Darrian Bertrand

Climate Assessment Specialist, Southern Climate Impacts Planning Program (SCIPP), University of Oklahoma, Norman, OK  
[dbertrand@ou.edu](mailto:dbertrand@ou.edu)

### Benét Duncan

Managing Director, Western Water Assessment (WWA), University of Colorado Boulder, Boulder, CO  
[benet.duncan@colorado.edu](mailto:benet.duncan@colorado.edu)

<https://cpo.noaa.gov/RISA>

### Zena Grecni

Sustained Climate Assessment Specialist, Pacific RISA, East-West Center Honolulu, HI  
[grecniz@eastwestcenter.org](mailto:grecniz@eastwestcenter.org)

### Anna LoPresti

Sustained Climate Assessment Specialist, Consortium on Climate Risk in the Urban Northeast (CCRUN), Columbia University, New York, NY, [all2179@columbia.edu](mailto:all2179@columbia.edu)

### Danielle Meeker

Sustained Assessment Specialist, Alaska Center for Climate Assessment and Policy (ACCAP), University of Alaska Fairbanks, Fairbanks, AK, [demeeker@alaska.edu](mailto:demeeker@alaska.edu)

